

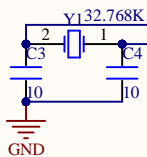
MCU_A

U1A

WK_UP	PA0	34	PA0-WKUP/USART2_CTS/ADC123_IN0/TIM5_CH1/TIM2_CH1_ETR/TIM8_ETR	
STM_ADC	PA1	35	PA1/USART2_RTS/ADC123_IN1/TIM5_CH2/TIM2_CH2	
USART2_TX	PA2	36	PA2/USART2_TX/ADC123_IN2/TIM5_CH3/TIM2_CH3	
USART2_RX	PA3	37	PA3/USART2_RX/ADC123_IN3/TIM5_CH4/TIM2_CH4	
GBC_KEY	STM_DAC	PA4	40	PA4/SPI1_NSS/DAC_OUT1/USART2_CK/ADC12_IN4
		PA5	41	PA5/SPI1_SCK/DAC_OUT2/ADC12_IN5
		PA6	42	PA6/SPI1_MISO/TIM8_BKIN/ADC12_IN6/TIM3_CH1
		PA7	43	PA7/SPI1_MOSI/TIM8_CH1N/ADC12_IN7/TIM3_CH2
	OV_VSYNC	PA8	100	PA8/USART1_CK/TIM1_CH1/MCO
	USART1_TX	PA9	101	PA9/USART1_TX/TIM1_CH2
	USART1_RX	PA10	102	PA10/USART1_RX/TIM1_CH3
	USB_D-	PA11	103	PA11/USART1_CTS/CAN_RX/TIM1_CH4/USBDM
	USB_D+	PA12	104	PA12/USART1_RTS/CAN_TX/TIM1_ETR/USBDBP
	JTMS	PA13	105	PA13/JTMS_SWDIO
	JTCK	PA14	109	PA14/JTCK_SWCLK
GBC_LED	JTDI	PA15	110	PA15/JTDI/SPI3_NSS/I2S3_WS

LCD_BL	PB0	46	PB0/ADC12_IN8/TIM3_CH3/TIM8_CH2N	
T_SCK	PB1	47	PB1/ADC12_IN9/TIM3_CH4/TIM8_CH3N	
T_MISO	BOOT1	PB2	48	PB2/BOOT1
OV_WEN	JTDO	PB3	133	PB3/JTDO/TRACESWO/SPI3_SCK/I2S3_CK
OV_RCLK	JTRST	PB4	134	PB4/JTRST/SPI3_MISO
	LED0	PB5	135	PB5/I2C1_SMBAL/SPI3_MOSI/I2S3_SD
	IIC_SCL	PB6	136	PB6/I2C1_SCL/TIM4_CH1
	IIC_SDA	PB7	137	PB7/I2C1_SDA/FSMC_NADV/TIM4_CH2
	BEEP	PB8	139	PB8/TIM4_CH3/SDIO_D4
	REMOTE_IN	PB9	140	PB9/TIM4_CH4/SDIO_D5
	GBC_RX	PB10	69	PB10/I2C2_SCL/USART3_TX
	GBC_TX	PB11	70	PB11/I2C2_SDA/USART3_RX
	F_CS	PB12	73	PB12/SPI2_NSS/I2S2_WS/I2C2_SMBAL/USART3_CK/TIM1BKIN
	SPI2_SCK	PB13	74	PB13/SPI2_SCK/I2S2_CK/USART3_CTS/TIM1_CH1N
	SPI2_MISO	PB14	75	PB14/SPI2_MISO/USART3_RTS/TIM1_CH2N
	SPI2_MOSI	PB15	76	PB15/SPI2_MOSI/I2S2_SD/TIM1_CH3N

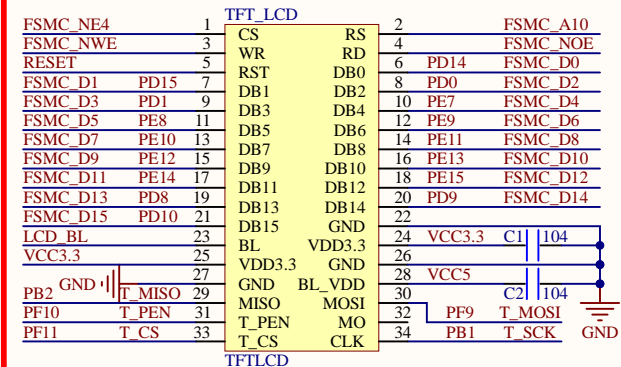
OV_D0	PC0	26	PC0/ADC123_IN10	
OV_D1	PC1	27	PC1/ADC123_IN11	
OV_D2	PC2	28	PC2/ADC123_IN12	
OV_D3	PC3	29	PC3/ADC123_IN13	
OV_D4	PC4	44	PC4/ADC12_IN14	
OV_D5	PC5	45	PC5/ADC12_IN15	
OV_D6	PC6	96	PC6/I2S2_MCK/TIM8_CH1/SDIO_D6	
OV_D7	PC7	97	PC7/I2S3_MCK/TIM8_CH2/SDIO_D7	
	SDIO_D0	PC8	98	PC8/TIM8_CH3/SDIO_D0
	SDIO_D1	PC9	99	PC9/TIM8_CH4/SDIO_D1
	SDIO_D2	PC10	111	PC10/UART4_TX/SDIO_D2
	SDIO_D3	PC11	112	PC11/UART4_RX/SDIO_D3
	SDIO_SCK	PC12	113	PC12/UART5_TX/SDIO_CK
		PC13	7	PC13-TAMPER-RTC
		PC14	8	PC14-OSC32_IN
		PC15	9	PC15-OSC32_OUT



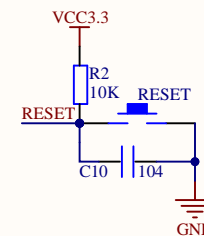
FSMC_D2	PD0	114	PD0/FSMC_D2
FSMC_D3	PD1	115	PD1/FSMC_D3
SDIO_CMD	PD2	116	PD2/TIM3_ETR/UART5_RX/SDIO_CMD
OV_SCL	PD3	117	PD3/FSMC_CLK
FSMC_NOE	PD4	118	PD4/FSMC_NOE
FSMC_NWE	PD5	119	PD5/FSMC_NWE
OV_WRST	PD6	122	PD6/FSMC_NWAIT
RS485_RE	PD7	123	PD7/FSMC_NE1/FSMC_NCE2
FSMC_D13	PD8	77	PD8/FSMC_D13
FSMC_D14	PD9	78	PD9/FSMC_D14
FSMC_D15	PD10	79	PD10/FSMC_D15
	PD11	80	PD11/FSMC_A16
	PD12	81	PD12/FSMC_A17
	PD13	82	PD13/FSMC_A18
FSMC_D0	PD14	85	PD14/FSMC_D0
FSMC_D1	PD15	86	PD15/FSMC_D1

STM32F103ZET6_AB

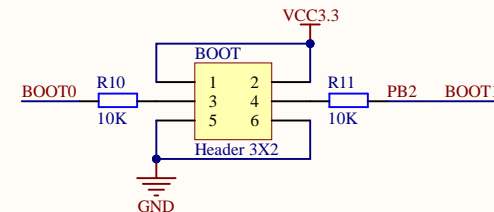
LCD



RESET

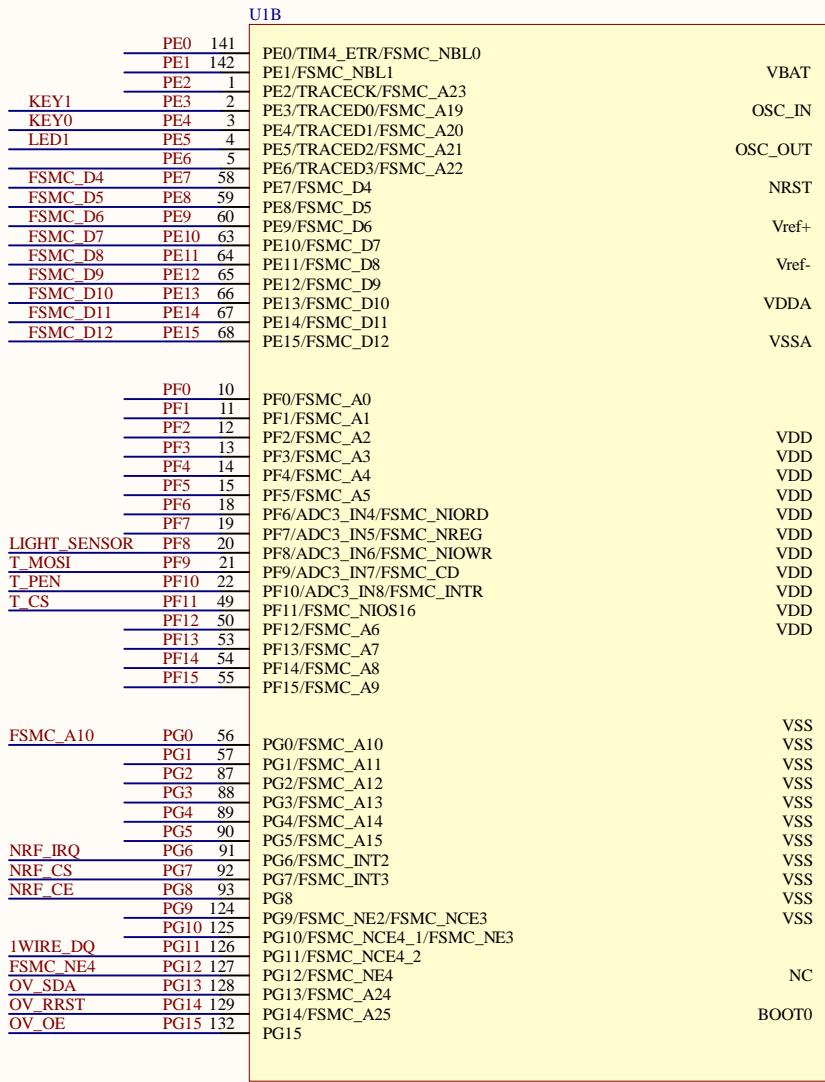


BOOT

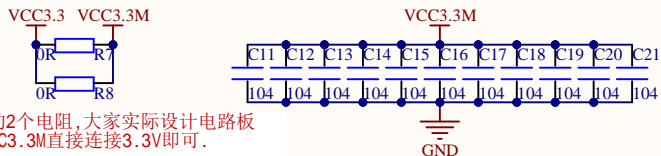


Title:		ALIENTEK Elite STM32F103 Board	
Author:	ATOM	Size:	A4
Date:	2023/5/25	File:	CORE_ABCD.SchDoc
Revision:	*	Version:	V2.6
		Cannot open file F:\protel study\元件库\正点原子_整_NEW.bmp	

MCU_B

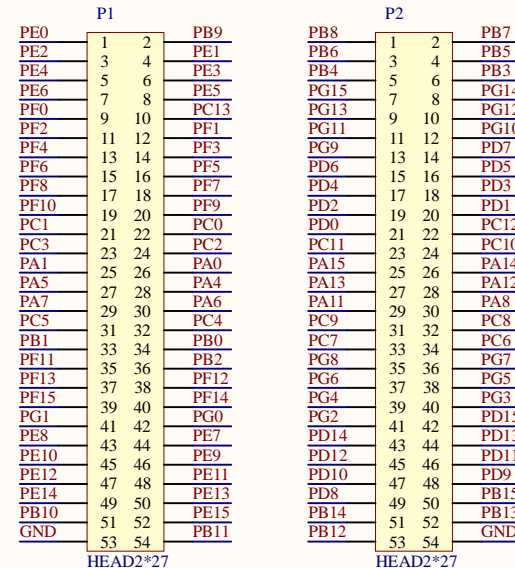


STM32F103ZET6_AB

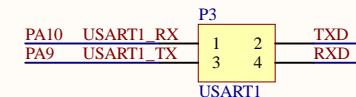


R7/R8是为了维修方便而增加的2个电阻,大家实际设计电路板时候,可以不加这两个电阻.VCC3.3M直接连接3.3V即可。

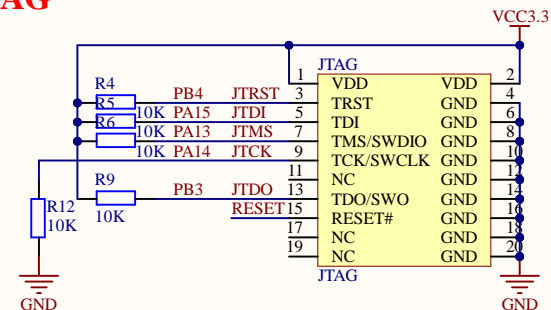
IO



USB_UART/USART1

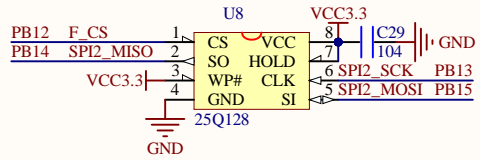


JTAG

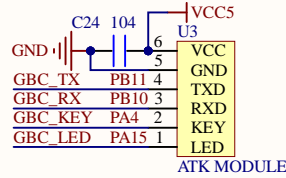


Title:	ALIENTEK Elite STM32F103 Board	Cannot open file
Author:	ATOM	F:\protel
Date:	2023/5/25	study\元件库\正点原子_整_NEW
Revision:		bmp
	Version:	
	V2.6	

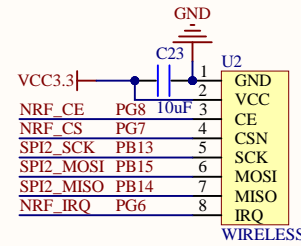
SPI FLASH



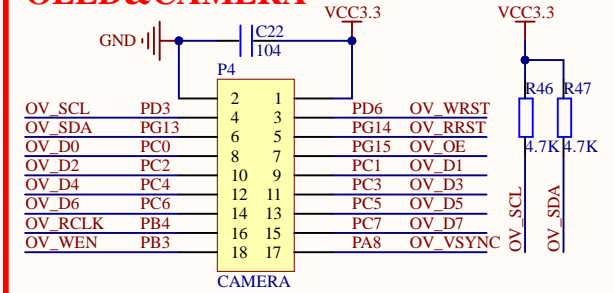
ATK MODULE



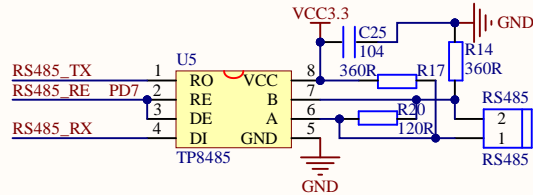
WIRELESS



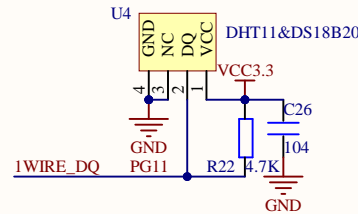
OLED&CAMERA



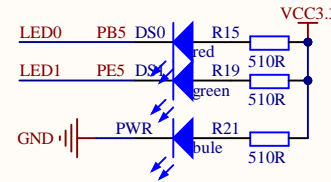
RS485



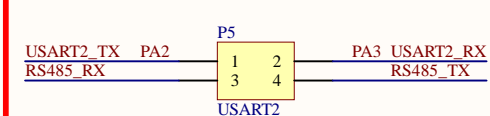
TEMP&HUMI SENSOR



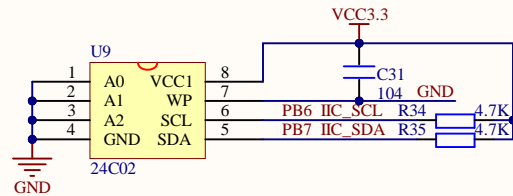
LED



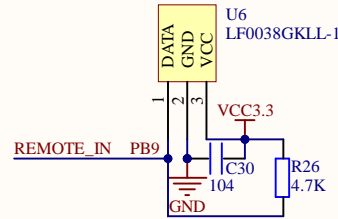
RS485 SELECT



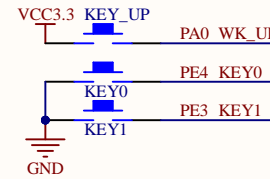
EEPROM



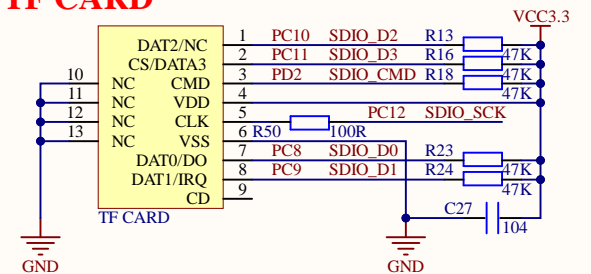
REMOTE



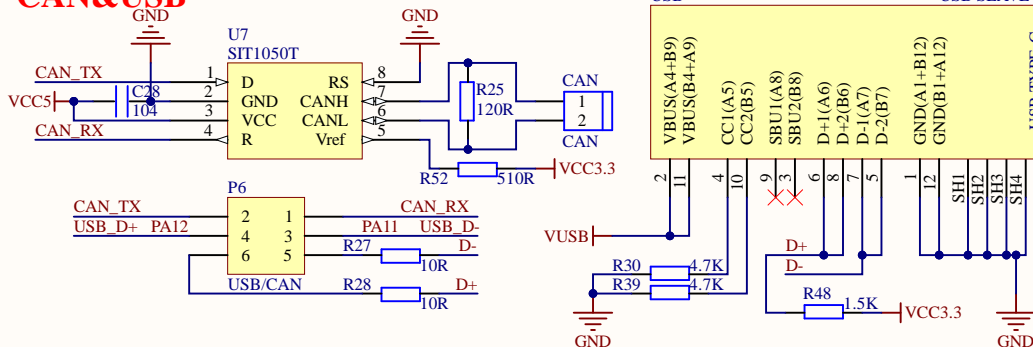
KEY



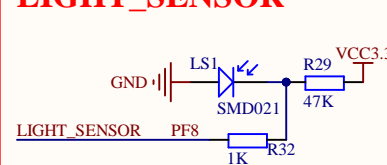
TF CARD



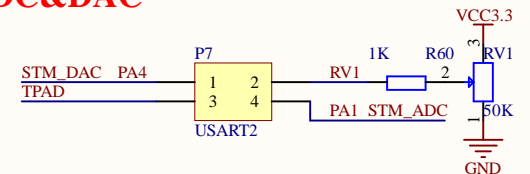
CAN&USB



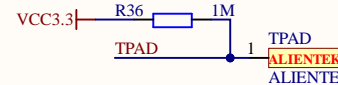
LIGHT_SENSOR



ADC&DAC

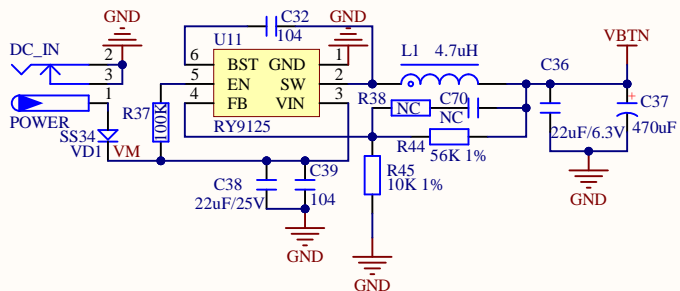


TOUCH_KEY

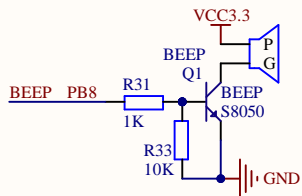


Title:	ALIENTEK Elite STM32F103 Board	
Author:	ATOM	Size: A4
Date:	2023/5/25	File: DEVICES.SchDoc
Revision:		Version: V2.6
		Cannot open file F:\protel study\元件库\正点原子_整_NEW.bmp

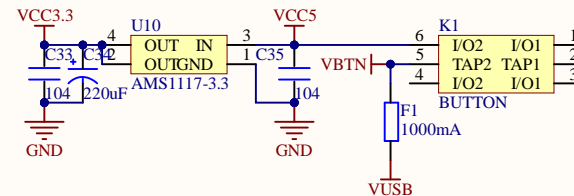
DC POWER IN



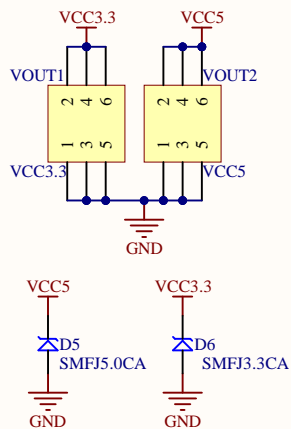
BEEP



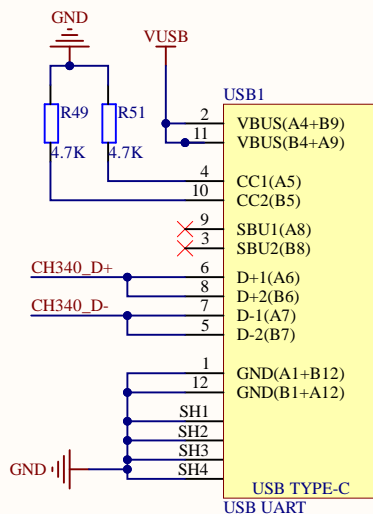
3.3V & POWER SWITCH



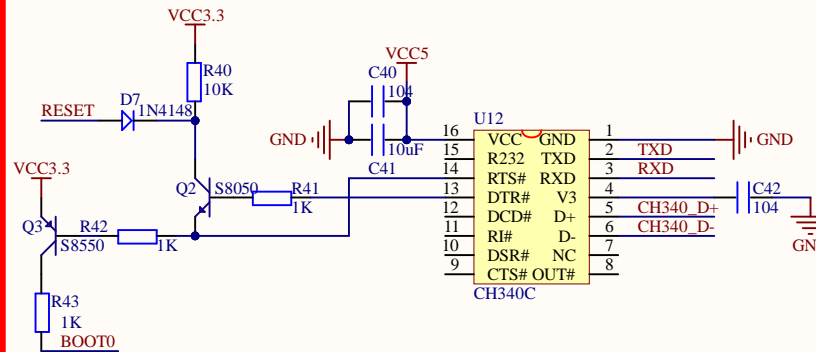
ON BOARD POWER SOURCE



USB USART



USB POWER



Title: ALIENTEK Elite STM32F103 Board		Cannot open file F:\protel study\元件库\正 点原子_整_NEW bmp
Author: ATOM	Size: A4	
Date: 2023/5/25	File: POWER&USB_USART.SchDoc	
Revision:	Version: V2.6	
j		

